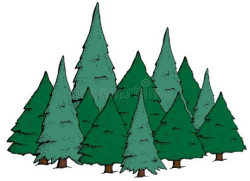




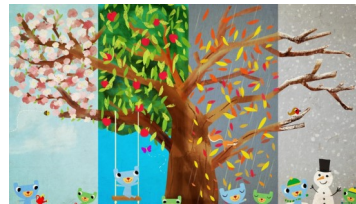
Enchanted Woodland

There are two main types of trees:

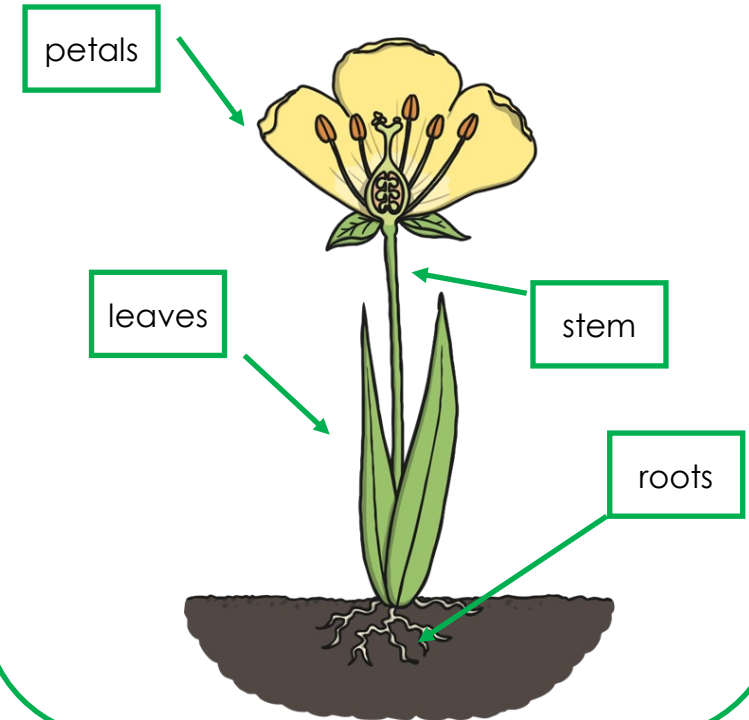


An **evergreen** tree has leaves all year round, they are often *small, narrow, thin* and waxy.

A **deciduous** tree is a tree that loses its leaves in the winter, they will often go *brown, orange, yellow* or *red* in the autumn before they fall off!



Most plants (**including trees**) have a similar structure:



Can you recognise these common garden plants?



Sunflower



Rose



Tulip



Bluebell



Daffodil



Lilly



Daisy

Petal	Petals are brightly coloured to bring insects to pollinate the flower.
Stem	The stem supports the plant above ground, and carries the water and minerals to the leaves.
Leaves	Leaves absorb the light to help the plant make its own food.
Roots	The roots anchor the plant into the ground.